



体系认证



质量管理体系认证



专利证

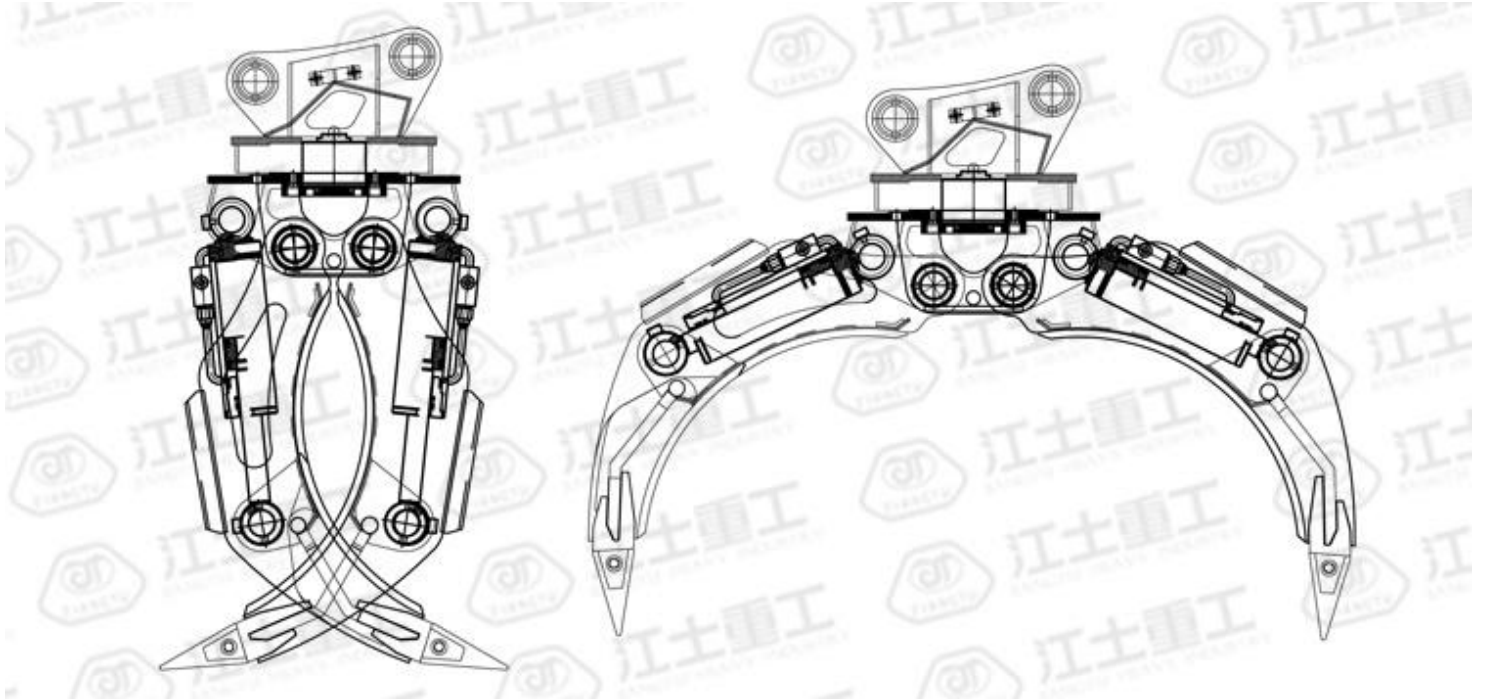


CE认证

## Specification for Wood/Log Grapple



## Specification



### Wood / Log Grapple

Category	Unit	JT-mini	JT-02	JT-04	JT-06	JT-08	JT-10	JT-17
Max jaw opening	mm	1100	1300	1400	1800	2300	2500	2500
Oil pressure	kg/cm <sup>2</sup>	100-120	110-140	120-160	150-170	160-180	160-180	180-200
Necessary flow	lpm	20-30	30-55	50-100	90-110	100-140	130-170	200-250
Max cylinder force	ton	4.0*2	4.0*2	4.5*2	8.0*2	9.7*2	12*2	12*2
Excavator weight	ton	3	4-6	7-11	12-16	17-23	24-30	31-40
Weight	kg	249	320	390	740	1380	1700	1900

## Main Features

- ◆ Using NM500 steel and all pins are heart treated making our grapple with a very long service life and high carrying capacity.
- ◆ Two types could be chosen, rotating type(360° rotation function available) and non-rotating type,OEM is available.



## Application

Steel scraps, wastes handling, loading and unloading.



## Gallery



## Packing & Shipping

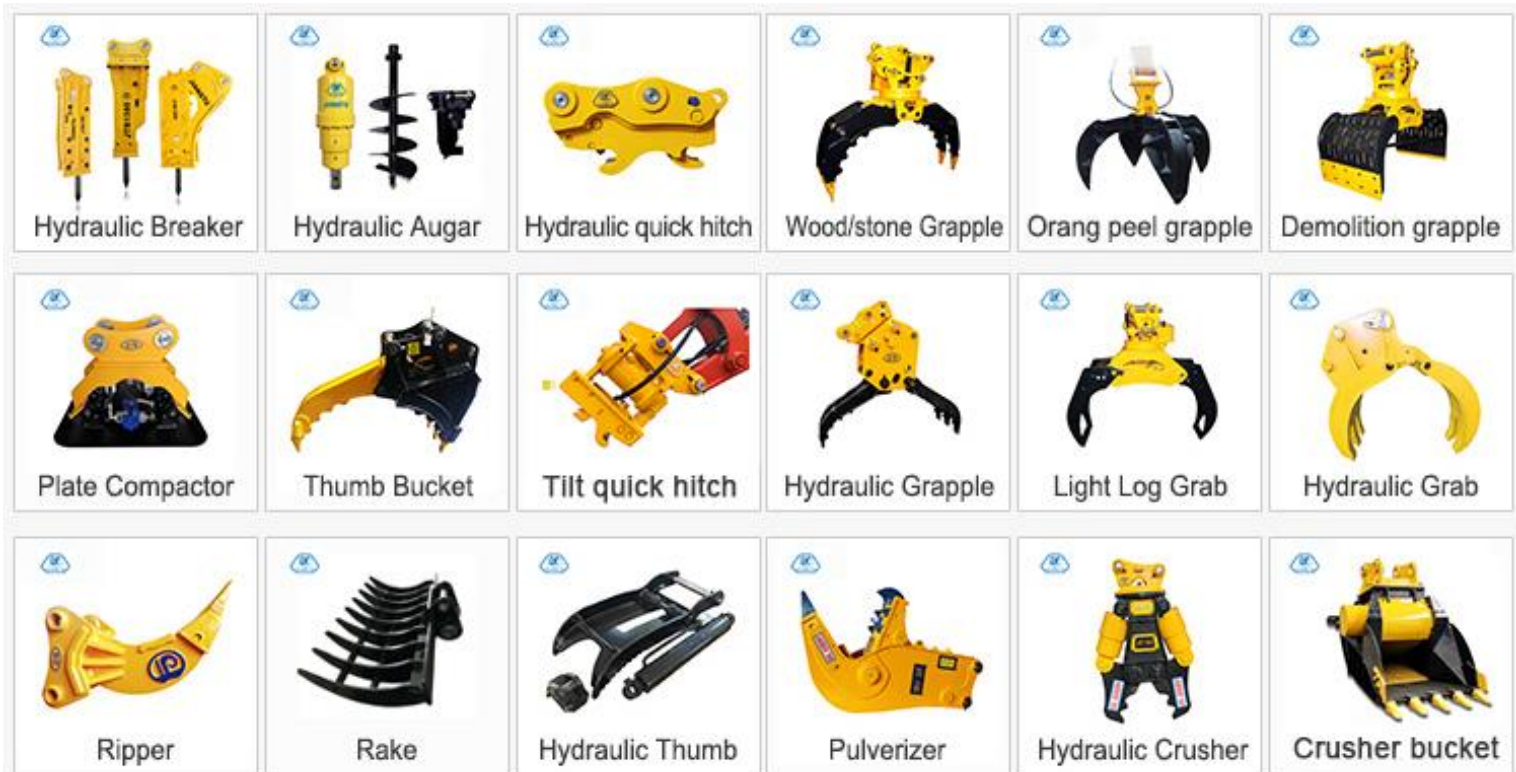


## Manufacturing Equipments

- ◆ We have 10 years experience in manufacturing excavator attachments.
- ◆ With 6 professional engineers and 40 skilled workers, we aim to be your one stop solution provider.



## Our Key Product



## Our Service

- ◆ **Warranty Period:** 12 Months
- ◆ **Spare parts:** Enough spare parts for warranty are stocked.
- ◆ After-sales system and procedures were established to collect and analyze customer's feedback to take corrective actions.



**Thank You!**  
**We look forward to your cooperation!**