

## COMPANY PROFILE

Yantai Jiangtu Mechanical Equipment Company is a leading manufacturer for construction machine and parts. Our products are widely used at construction site, mining, farm, agriculture, quarry, and other industries. All products' quality are strictly under control from processing to delivery. By continuous innovation and improvement, the company has got ISO 9001, CE Certifications and technical patents successively. The most popular products are mini excavators from 0.8 ton to 6 ton, excavator attachments such as buckets, hydraulic breakers and so on. Our products have been exported to USA, France, Germany, Australia, New Zealand, Canada, Italy, Russia, Thailand, etc.. We have gained good reputation from our customers. We'd like to provide professional services to you and do long-term business with you!



## MINI EXCAVATORS



JT-08



JT-08C



JT-10



JT-16



JT-18



JT-18C



JT-45



JT-60



## JT-08 MINI EXCAVATOR

### MAIN FEATURES

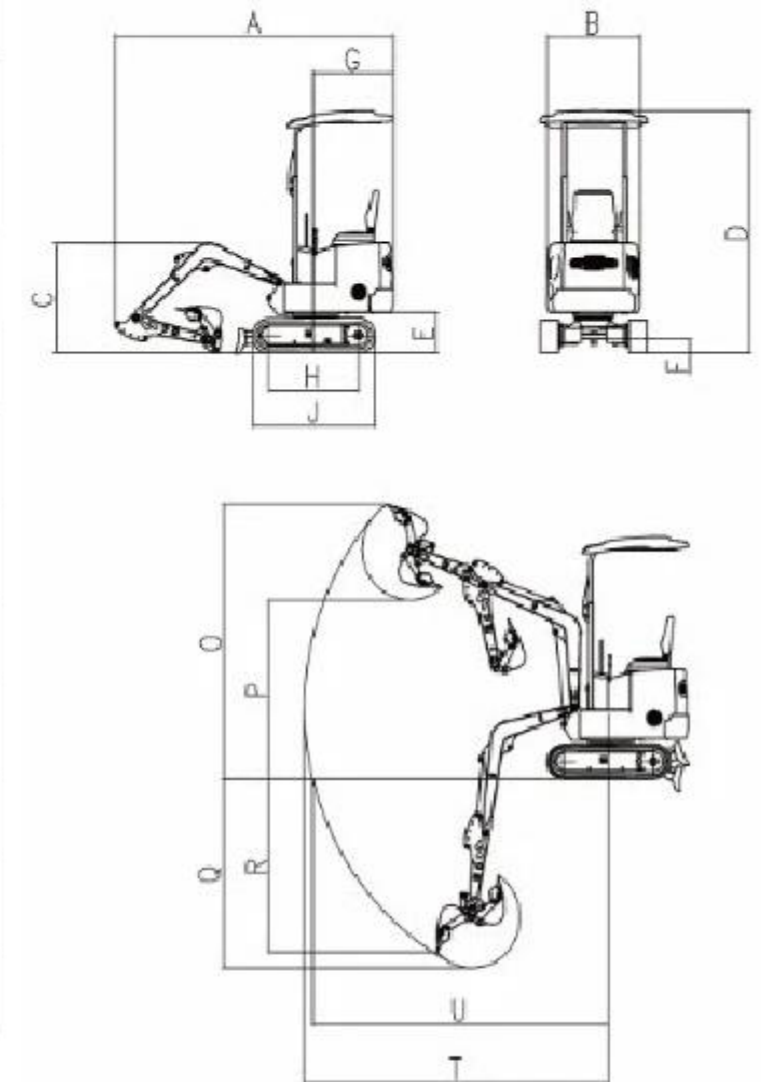
- JT08 mini excavators are flexible in narrow spaces.
- The excavator is made of high-strength steel which can be used to dig trenches from the group up.
- Euro V stage Koop or Changchai engine available.
- Large volume hydraulic oil tank prolongs the working time.



## PARAMETERS

JT08 Mini Excavator		
Rated Power	HP	9.2
Bucket capacity (SAE)	m <sup>3</sup>	0.025
Engine Model	Changchai 192	
Operating Weight	Kg	638
Max. digging force	KN	7.5
Pump Type	Single gear pump	
Working Pressure	MPa	14
Swing Speed	rpm	12
Travel Speed	KW/h	2.2
Max. Climbing Degree	°	30
Grounding pressure	Kpa	19

Working Range		
Max. Digging Reach	mm	2450
Max. digging depth	mm	1300
Max. digging height	mm	2350
Max. unloading height	mm	1600
Min. Swing Radius	mm	1100
Max. Ground Clearance of Dozer	mm	120
Max. Supporting Depth of Dozer	mm	200



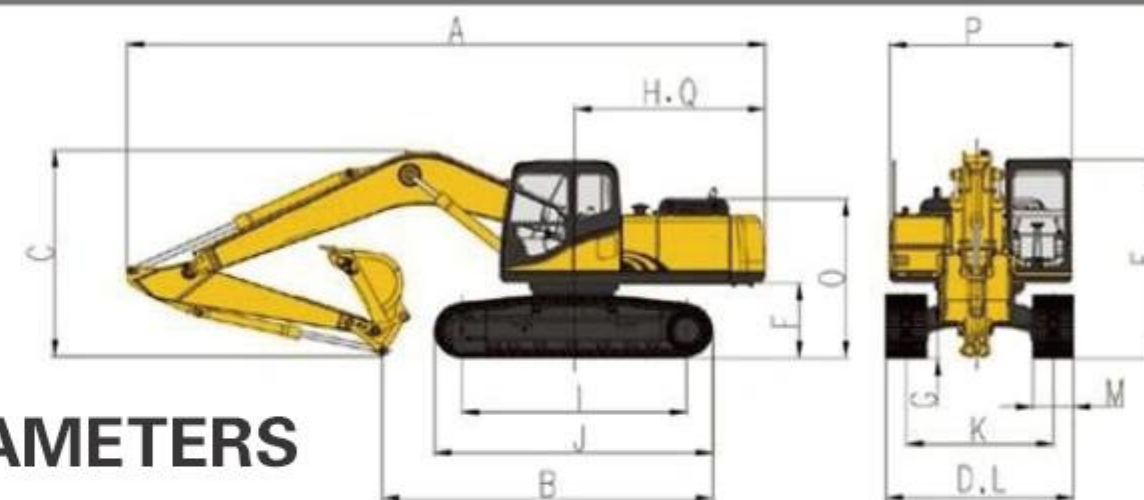
Dimensions		
Total width	mm	720
Total height	mm	1300
Total length	mm	2430
Track Width	mm	150
Min. Ground Clearance	mm	80
Track Ground Length	mm	1140



## JT-08C MINI EXCAVATOR

### MAIN FEATURES

- Koop or Changchai engine which has low fuel consumption and high efficiency.
- The excavator is very compact and easy for operation.
- The shovels can dig very tight spaces easily.
- JT08C has more sensitive operation and control, more stable and reliable.



### PARAMETERS

JT08C MINI Excavator Specification

Model	JT08C (Euro 5)	Overall height (to top of cab)	1495mm
Operating weight	850 kg	Counterweight ground clearance	385mm
Bucket capacity	0.022 cbm	Min. ground clearance	132mm
Engine model	KOOP KD192F-1	Tail swing radius	800mm
Rated power	7.0/3000 kw/r/min	Track Ground Length	900mm
Hydraulic pump model	China Brand	Track length	1233mm
Working pressure	16 (Mpa)	Track gauge	670mm
Max.flow	18 (L/min)	Track width	840mm
Control valve	China Brand	Track shoe width	180mm
Swing motor	OMR200	Turntable width	760mm
Travel motor	SMT310	Max. digging height	2550mm
Fuel tank capacity	7 L	Max. dumping height	168mm
Hydraulic oil tank capacity	14.5 L	Max. digging depth	1787mm
Travel speed	1.9 km/h	Max. vertical wall digging depth	1626mm
Swing speed	13 r/min	Max. digging reach	3077mm
Max. climbing degree	58%	Max. digging reach at ground level	2992mm
Arm digging force	4.6	Min. swing radius	1483mm
Bucket digging force	7.2 KN	Distance between center of rotation and tail length	795mm
Average grounding pressure	20 Kpa	Height of counterweight	366mm
Overall length	2876mm	Ground length (in transportation)	2650mm
Overall width	840/908mm	Arm length	800mm
Overall height (to top of boom)	1040mm	Boom length	1480mm



## JT-10 MINI EXCAVATOR

### MAIN FEATURES

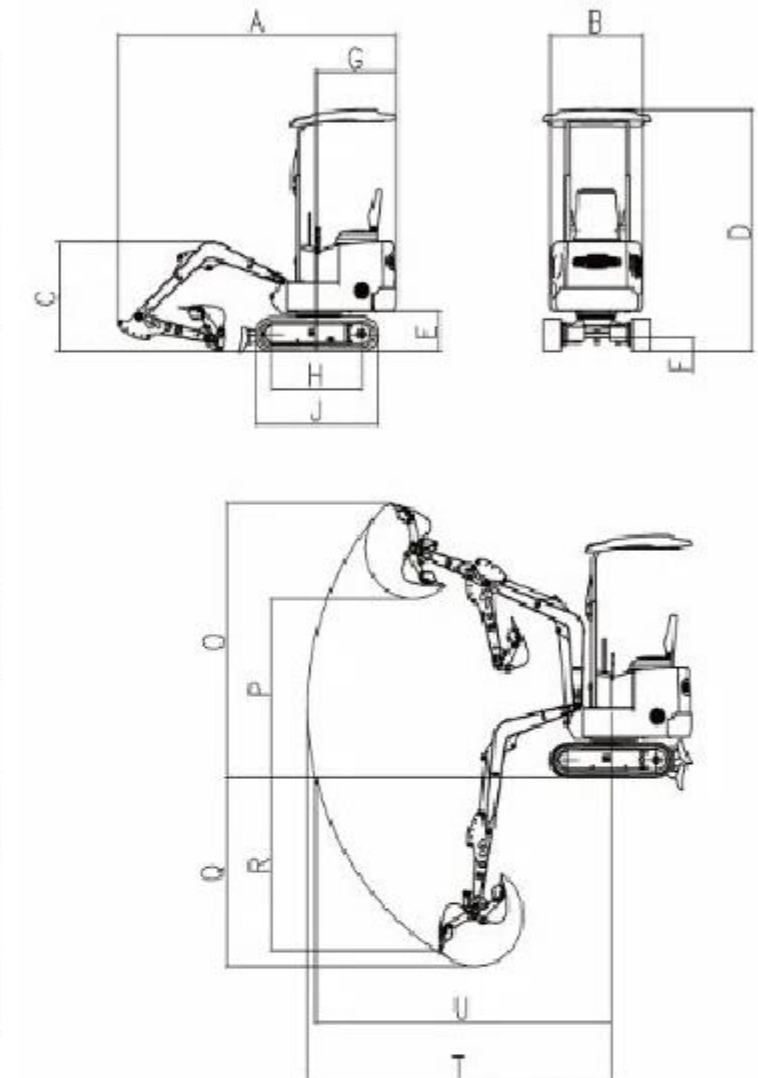
- Euro V stage Koop or Changchai engine available.
- Anti-rollover safety folding frame design prevents the excavator from being rolled over.
- Equipped with full cast iron hydraulic pump to prolong the lifetime.
- Equipped with imported Continental oil pipes to ensure the quality.



## PARAMETERS

JT10 Mini Excavator		
Rated Power	KW	9.2
Bucket capacity (SAE)	m <sup>3</sup>	0.03
Engine Model	Changchai 192	
Operating Weight	Kg	758
Max. Digging Force	KN	7.5
Pump Type	Single gear pump	
Working Pressure	MPa	14
Swing Speed	rpm	12
Travel Speed	KW/h	2.2
Max. Climbing Degree	°	30
Grounding pressure	Kpa	19

Working Range		
Max. Digging Reach	mm	2450
Max. Digging Depth	mm	1410
Max. Digging Height	mm	2420
Max. Dumping Height	mm	1650
Min. Swing Radius	mm	1100
Max. Ground Clearance of Dozer	mm	120
Max. Supporting Depth of Dozer	mm	200



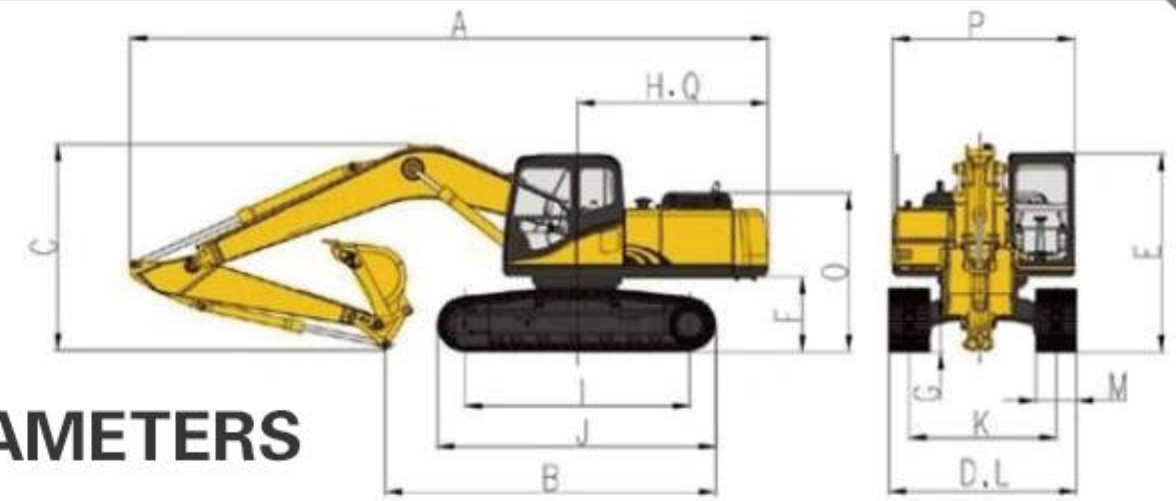
Dimensions		
Total width	mm	820
Total height	mm	1400-1900
Total length	mm	2430
Track width	mm	150
Min. Ground Clearance	mm	80
Track Ground Length	mm	1140



## JT-16 MINI EXCAVATOR

### MAIN FEATURES

- Imported Yanmar engine, EURO V stage.
- Imported Parker or Eaton main pump, valve, swing motor and travel motor.
- Air filter with electronic differential pressure indicator and it can automatic alarm in case of blockage.
- Swing booms meet narrow work condition.
- Optional quick hitch, hydraulic breaker, ripper, grapple and auger.



### PARAMETERS

JT16 MINI Excavator Specification

Model	JT16	Overall height (to top of boom)	1157mm
Operating weight	1700kg(with canopy)	Overall height (to top of cab)	2411mm
Bucket capacity	0.04m <sup>3</sup> (SAE)	Counterweight ground clearance	484mm
Engine model	Yanmar 3TNV70	Min. ground clearance	175mm
Rated power	10kw/2200rpm	Tail swing radius	660mm
Hydraulic pump model	CASAPPA, Italy	Track Ground Length	1210mm
Working pressure	21 (Mpa)	Track length	1588mm
Max.flow	2x20+15.1(L/min)	Track gauge	760mm
Control valve	Hydro Control, Italy	Track width	990mm
Swing motor	Eaton, USA	Track shoe width	230mm
Travel motor	Eaton, USA	Max. digging height	3281mm
Fuel tank capacity	28 L	Max. dumping height	2393mm
Hydraulic oil tank capacity	17.5L Tank Oil Level/24L	Max. digging depth	2033mm
Travel speed	2.7/5.0(km/h)	Max. vertical wall digging depth	1605mm
Swing speed	8.8 r/min	Max. digging reach at ground level	3878mm
Max. climbing degree	58%	Min. swing radius	1625mm
Arm digging force	9.1 KN	Distance between center of rotation and tail length	665mm
Bucket digging force	11.2 KN	Height of counterweight	366mm
Average grounding pressure	28 Kpa	Arm length	950mm
Overall length	3694mm	Boom length	1829mm
Overall width	1000mm		



## JT-18 MINI EXCAVATOR

### MAIN FEATURES

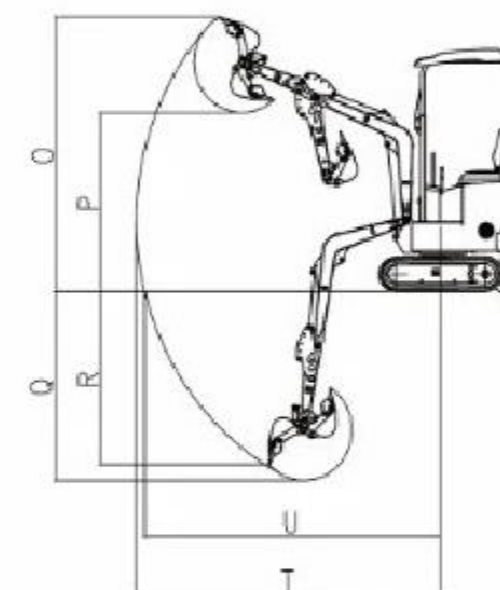
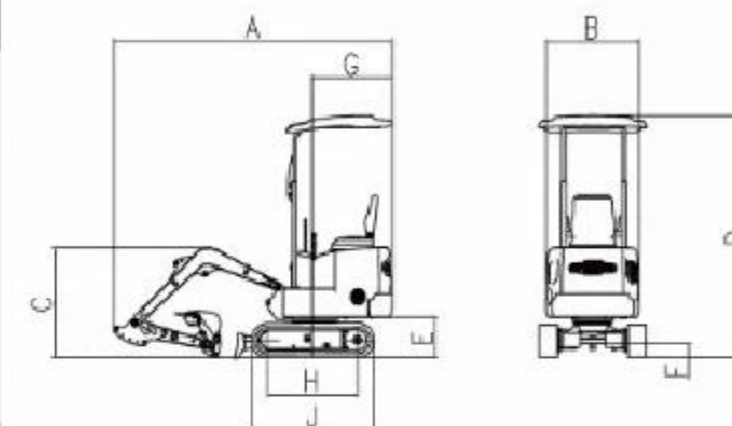
- Imported Kubota engine, EURO V stage.
- Japan Shimadzu or USA Parker gear pump.
- USA Eaton rotary motor.
- Sliding telescopic rubber track.
- Swing boom cylinder makes the excavator more flexible.
- Zero tail design makes the excavator easy to enter narrow space.



## PARAMETERS

JT18 Excavator Specification

Operating Weight		Kg	1760
Bucket capacity (SAE)		m³	0.05
Max. Digging Force		KN	15.2
Swing Speed		rpm	9
Travel Speed		KW/h	2.0/3.5
Ground pressure		Kpa	25
Fuel Tank Capacity		L	18
Engine			
Model	Kubota	D902-EF08	
Rated power	KW	10.3/2200	
Type	Diesel	Water-cooled	
Hydraulic System			
Max. Flow		L/min	39.6
Rated Working Pressure		MPa	20.6
Type	hydraulic safety lock		
Dimensions(transport)			
Overall Length	mm	3540	
Overall Width	mm	980/1240 (All)	
Overall Height	mm	2250	
Track width	mm	230	
Min. Ground Clearance	mm	172	
Gauge	mm	750/1070(All)	



Working Range

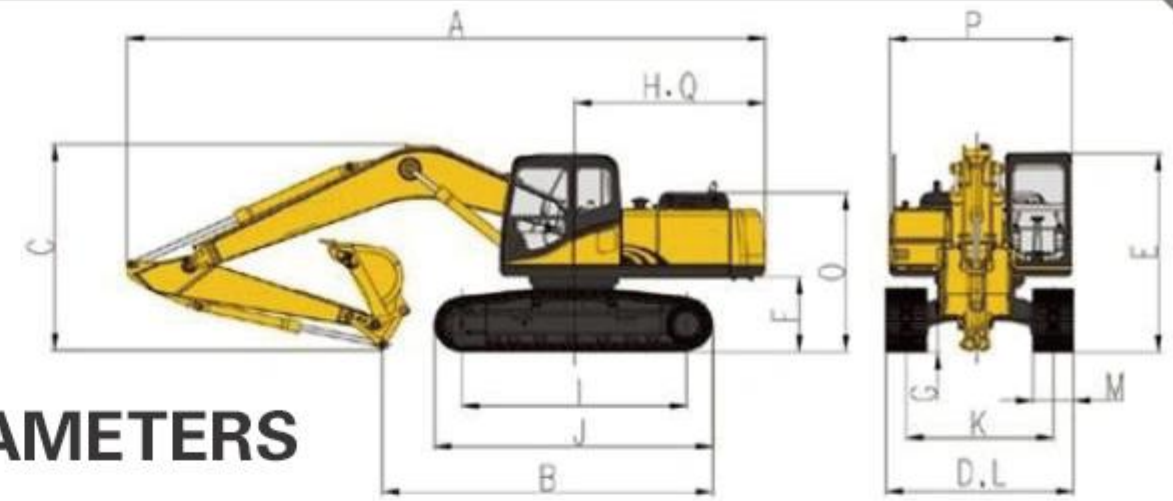
Max. Digging Height	mm	3553
Max. Dumping Height	mm	2448
Max. Digging Depth	mm	2310
Max. Digging Reach	mm	4003
Max. Digging Reach at Ground Level	mm	3900
Min. Tail Swing Radius	mm	620
Operating Swing Radius	mm	1430
Boom Deflection	°	65 (left) 58 (right)



## JT-18C MINI EXCAVATOR

### MAIN FEATURES

- Imported Yanmar engine, EURO V stage.
- Italy CASAPPA hydraulic pumps, USA EATON travel and swing motor, Italy hydro control main valve.
- Low noise and fuel consumption, big torque.
- High-precision air filter and standard two-stage diesel filtration to ensure reliable engine operation
- The excavator provides precision control and excellent operate environment.



### PARAMETERS

JT18C MINI Excavator Specification

Model	JT18C	Overall width	1000mm
Operating weight	1800kg(with canopy) 1900 Kg (with cab)	Overall height (to top of boom)	1178mm
Bucket capacity	0.04m3 (SAE)	Overall height (to top of cab)	2261mm
Engine model	Yanmar 3TNV70	Counterweight ground clearance	484mm
Rated power	14.7kw/2200rpm	Min. ground clearance	175mm
Hydraulic pump model	CASAPPA, Italy	Tail swing radius	1072mm
Working pressure	21 (Mpa)	Track Ground Length	1210mm
Max.flow	2x20.7+15.1(L/min)	Track length	1588mm
Control valve	Hydro Control, Italy	Track gauge	760mm
Swing motor	Eaton, USA	Track width	990mm
Travel motor	Commer, Italy	Track shoe width	230mm
Fuel tank capacity	28 L	Max. digging height	3243mm
Hydraulic oil tank capacity	18L Tank Oil Level / 26L Hydraulic System	Max. dumping height	2355mm
Travel speed	2.7/5.0(km/h)	Max. digging depth	2071mm
Swing speed	8.8 r/min	Max. vertical wall digging depth	1643mm
Max. climbing degree	58%	Max. digging reach at ground level	3835mm
Arm digging force	10.9 KN	Min. swing radius	1575mm
Bucket digging force	12.7 KN	Distance between center of rotation and tail length	1072mm
Average grounding pressure	28 Kpa	Arm length	950mm
Overall length	3867mm	Boom length	1829mm

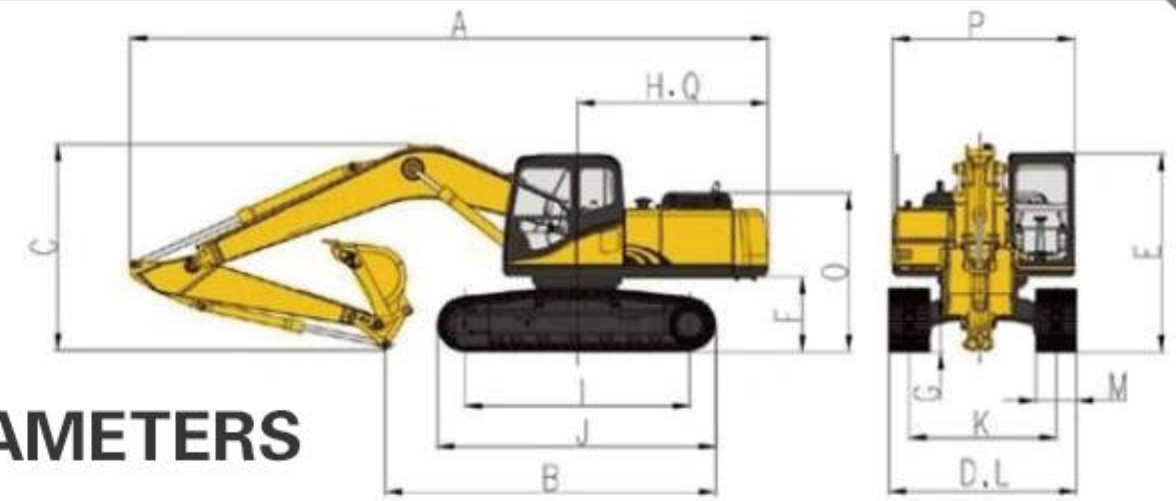




## JT-45 MINI EXCAVATOR

### MAIN FEATURES

- Imported Yanmar Engine with big torque, low fuel consumption and high efficiency.
- Cab with noise insulation seals, comfortable armrest and safety lock.
- CPU has artificial intelligence and automatic diagnosis function, which avoids long-time engine running and reduce fuel consumption.
- The boom joint adopts whole casting steel structure which improves the overall strength.



### PARAMETERS

JT45 MINI Excavator Specification

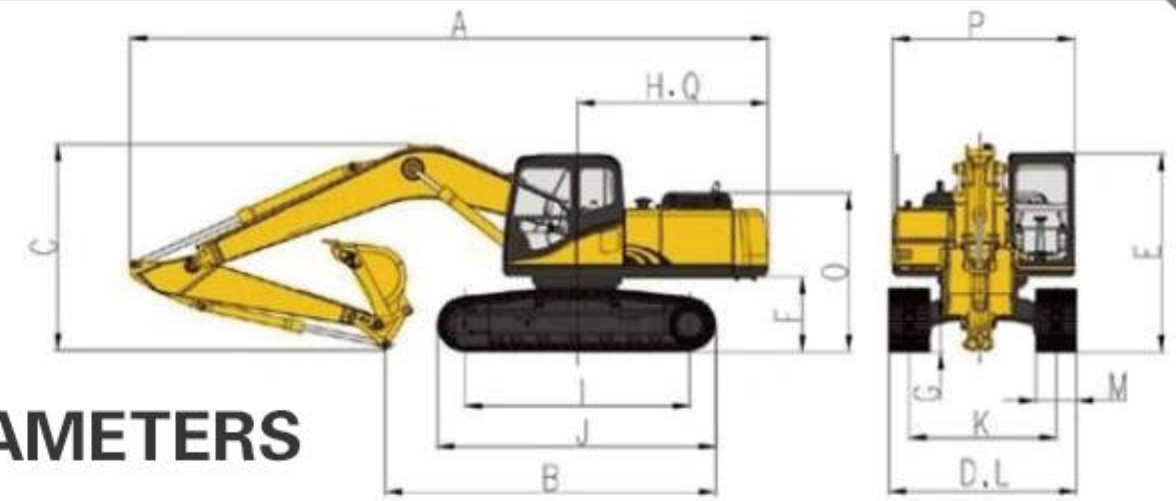
Model	JT45	Overall width	1750mm
Operating weight	4200Kg	Overall height (to top of boom)	1861mm
Bucket capacity	0.17m3 (SAE)	Overall height (to top of cab)	2455mm
Engine model	Yanmar 4TNV88	Counterweight ground clearance	585mm
Rated power	25.2kw/2200rpm	Min. ground clearance	350mm
Hydraulic pump model	KYB, Japan	Tail swing radius	1600mm
Working pressure	24.5 (Mpa)	Track Ground Length	1710mm
Max.flow	2x45.7+36.9(L/min)	Track length	2190mm
Control valve	KYB, Japan	Track gauge	1400mm
Swing motor	KYB, Japan	Track width	1750mm
Travel motor	KYB, Japan	Track shoe width	350mm
Fuel tank capacity	82 L	Max. digging height	5030mm
Hydraulic oil tank capacity	59L Tank Oil Level 85L Hydraulic System	Max. dumping height	3410mm
Travel speed	2.7/4.4(km/h)	Max. digging depth	3405mm
Swing speed	10 r/min	Max. vertical wall digging depth	2900mm
Max. climbing degree	58%	Max. digging reach at ground level	5520mm
Arm digging force	21.6 KN	Min. swing radius	2185mm
Bucket digging force	23.7 KN	Distance between center of rotation and tail length	1600mm
Average grounding pressure	36 Kpa	Arm length	1450mm
Overall length	5500mm	Boom length	2650mm



## JT-60 MINI EXCAVATOR

### MAIN FEATURES

- Imported Japan Yanmar Engine and KYB Pump.
- Imported hydraulic system with dual pump and dual circuit, stable work performance, fast speed.
- On-line digital monitoring and control system.
- Lower energy consumption, faster response speed and more precise control.
- Fuel system can be divided into three stages of filtration. Two stages of oil-water separator and one stage of fine filtration have high efficiency and good oil adaptability.
- Equipped with mature track idler, carrier roller, track roller, drive gear and track, which makes high bearing capacity, good wear resistance and high reliability.
- GPS satellite position and remote diagnose system(optional).
- Cold & warm air conditioner supply under different kinds of weather conditions.



### PARAMETERS

JT60 MINI Excavator Specification

Model	JT60	Overall width	2000mm
Operating weight	5820Kg	Overall height (to top of boom)	1995mm
Bucket capacity	0.22m3 (SAE)	Overall height (to top of cab)	2619mm
Engine model	Yanmar 4TNV94L	Counterweight ground clearance	740mm
Rated power	36.2kw/2100rpm	Min. ground clearance	360mm
Hydraulic pump model	KYB, Japan	Tail swing radius	1745mm
Working pressure	24.5 (Mpa)	Track Ground Length	2000mm
Max flow	160(L/min)	Track length	2665mm
Control valve	KYB, Japan	Track gauge	1600mm
Swing motor	KYB, Japan	Track width	2000mm
Travel motor	KYB, Japan	Track shoe width	400mm
Fuel tank capacity	125 L	Max. digging height	5889mm
Hydraulic oil tank capacity	78 L Tank Oil Level 100 L Hydraulic System	Max. dumping height	4201mm
Travel speed	2.5/4.0(km/h)	Max. digging depth	3812mm
Swing speed	10 r/min	Max. vertical wall digging depth	3008mm
Max. climbing degree	70%	Max. digging reach at ground level	6102mm
Arm digging force	26.1 KN	Min. swing radius	2585mm
Bucket digging force	36.7KN	Distance between center of rotation and tail length	1745mm
Average grounding pressure	34 Kpa	Arm length	1580mm
Overall length	5943mm	Boom length	3050mm